

# charnwood

*Machinery & Tooling at its best!*

## 3HP DUST EXTRACTOR 3 PHASE OPERATING INSTRUCTIONS

MODEL: W792/3



charnwood

Cedar Court, Walker Road, Bardon Hill, Leicestershire, LE67 1TU

Tel. 01530 516926 Fax 01530 516929

E-mail; sales@charnwood.net Website;www.charnwood.net

## CONTENTS

UNPACKING AND CHECKING CONTENTS.....	2
ASSEMBLY.....	3
SAFETY RULES.....	11
GROUNDING.....	13
PARTS DIAGRAM.....	14
PARTS LIST.....	15

READ THIS MANUAL CAREFULLY (ASSEMBLY, TESTING & OPERATING)

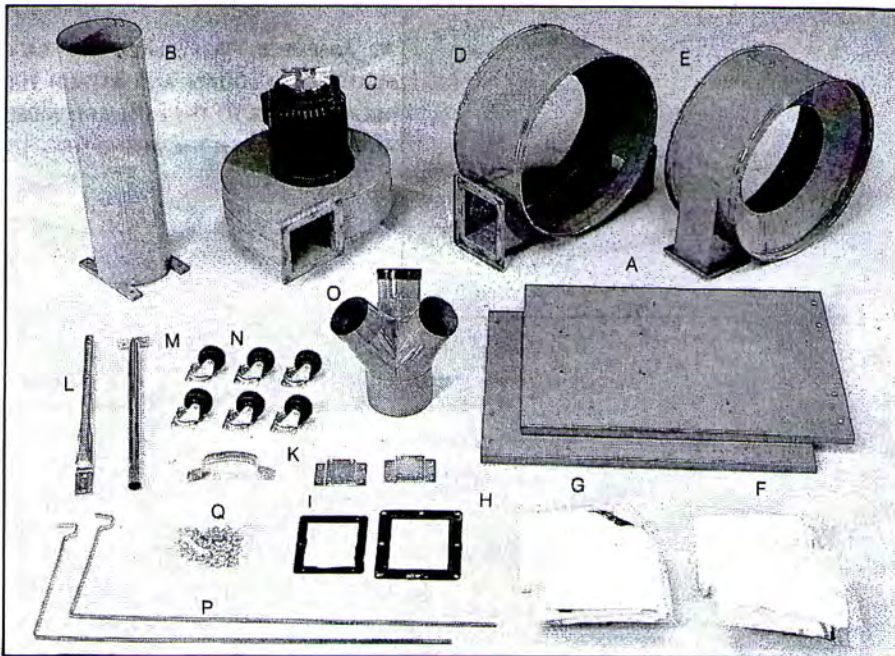
WARNING: DONOT OPERATE THIS UNIT UNTIL THE PVC HOSE IS INSTALLED ONTO THE DUST INLET PORT.

## OPTIONAL ACCESSORIES

PART NO.	DESCRIPTION
00-0101	9" ALUMINUM FAN
00-0102	12" ALUMINUM FAN
00-0201	BAG CLAMP FOR CT-80 A/C
00-0202	BAG CLAMP FOR CT-90 A/C
00-0203	BAG CLAMP FOR CT-99 HA/HC
00-0204	BAG CLAMP FOR CT-101/101H/201/201H
00-0205	BAG CLAMP FOR CT-202
00-0206	BAG CLAMP FOR CT-401
00-0301	FLEXIBLE HOSE, 2" IN DIA.
00-0302	FLEXIBLE HOSE, 4" IN DIA.
00-0303	FLEXIBLE HOSE, 5" IN DIA.
00-0304	FLEXIBLE HOSE, 6" IN DIA.
00-0401	REDUCER, 4" TO 2"
00-0501	HOSE CLAMP, 2" OR 6"
00-0601	TRANSPARENT COLLECTING BAG
00-0701	AIR FLOW CONTROL GATE, 4" IN DIA
00-0801	TAPERED CONNECTOR, 4" IN DIA.
00-0901	2-HOLE MANIFOLD, 4" OUTLET/5" INLET
00-0902	3-HOLE MANIFOLD, 4" OUTLET/6" INLET
00-0903	4-HOLE MANIFOLD, 4" OUTLET/6" INLET
00-0904	5-HOLE MANIFOLD, 4" OUTLET/9" INLET

## UNPACKING AND CHECKING CONTENTS

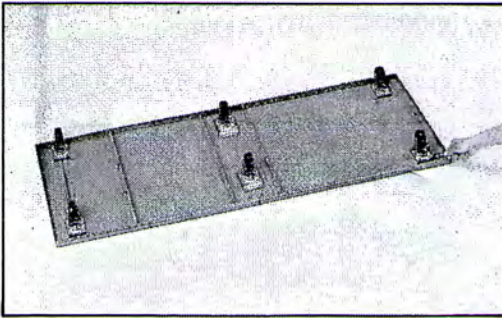
Unpack carton check machine to see parts listed below:



- |                              |                                      |
|------------------------------|--------------------------------------|
| A. BASE PLATE                | J. BRACK CASTER PLATE                |
| B. COLLECTOR SUPPORT         | K. HANDLE BAR                        |
| C. COLLECTOR BODY WITH MOTOR | L. COLLECTOR SUPPORT                 |
| D. COLLECTOR                 | M. COLLECTOR SUPPORT                 |
| E. COLLECTOR                 | N. CASTER                            |
| F. FILTER BAG                | O. INLET                             |
| G. COLLECTOR BAG             | P. UPPER BAG SUPPORT                 |
| H. PACKING                   | Q. SCREWS, NUTS, WASHERS, AND WRENCH |
| I. PACKING                   |                                      |

## ASSEMBLY

---



TO ASSEMBLE FIRST PLACE THE BASE PLATE UPSIDE DOWN. AND ATTACH THE TOUR CASTERS TO THE HOLES PROVIDED AND TIGHTEN WITH THE WRENCH. FIG. 1.

FIG. 1

WITH THE BASE PLATE USING TWO ASSEMBLE USING EIGHT  $5/16" \times 1/2"$  HEX FLANGE HEAD SCREWS. TIGHTEN ALL FASTENERS SECURELY. FIG. 2

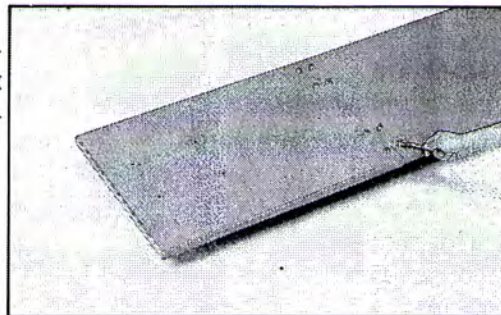


FIG. 2

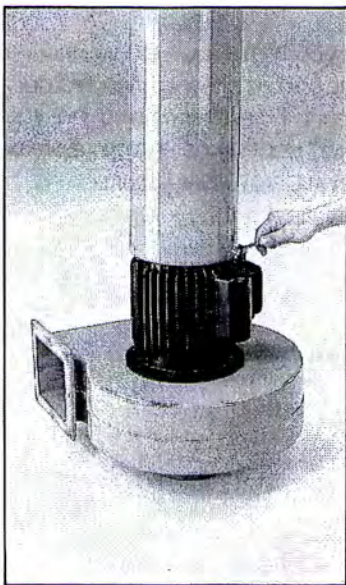


FIG. 3

WITH THE COLLECTOR BODY & FAN/MOTOR DOWN TO THE COLMN MOTOR BRACKET AND TIGHTEN THE THREE BELTS WITH OPEN END WRENCH AS SHOWN IN FIG. 3.

NEXT. THE BASE PLATE SIDE UP. ATTACH THE COLLECTOR SUPPORT TO THE BASE PLATE USING THE FOUR HOLES PROVIDED AND TIGHTEN WITH THE OPEN END WRENCH AS SHOWN IN FIG. 4.

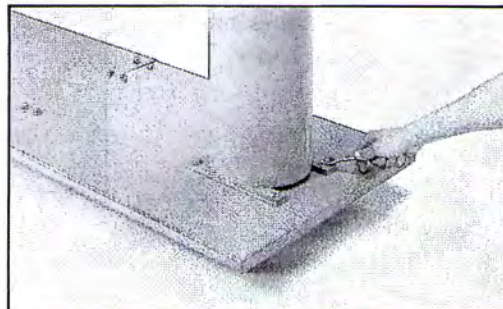


FIG. 4

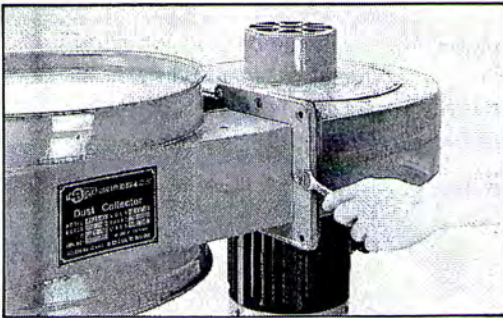


FIG. 5

NEXT MOUNT THE OUTLET PACKING (H) TO THE COLLECTOR BODY AND THE COLLECTOR THE ASSEMBLY USING EIGHT  $5/16" \times 1/2"$  HEX FLANGE HEAD SCREWS, TIGHTEN ALL FASTENERS SECURELY. FIG. 5.

WITH THE PACKING (I) MOUNT THE OUTLET TO THE COLLECTOR AND COLLECTOR ASSEMBLY USING SIX  $1/4" \times 1/2"$  HEX FLANGE HEAD SCREWS. TIGHTEN ALL FASTENERS SECURELY. FIG. 6

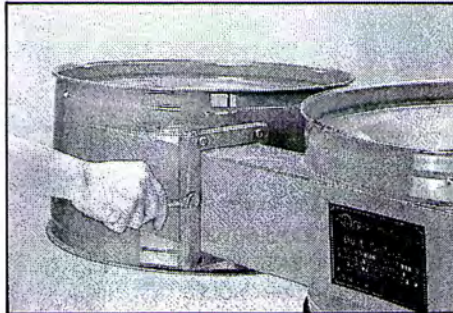


FIG. 6

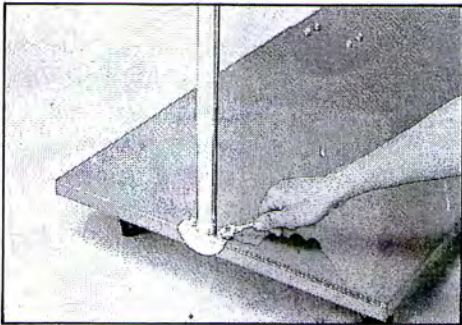


FIG. 7

NOW INSTALL THE TWO COLLECTOR SUPPORTS (L.M) AS SHOWN IN FIG.7 AND FIG.8 AND FIG. 9.

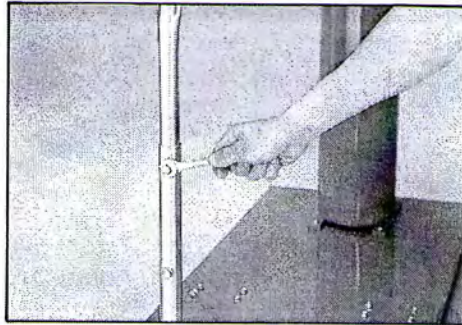


FIG. 8

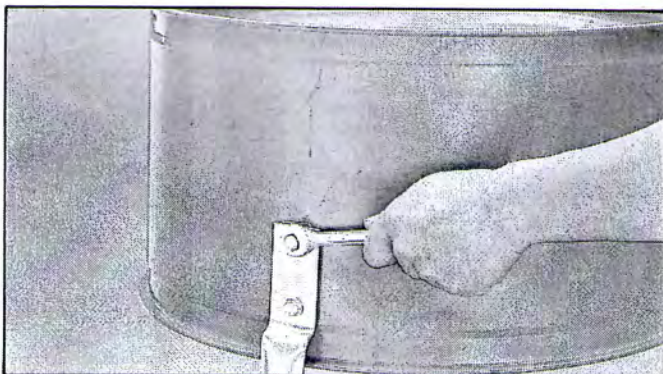
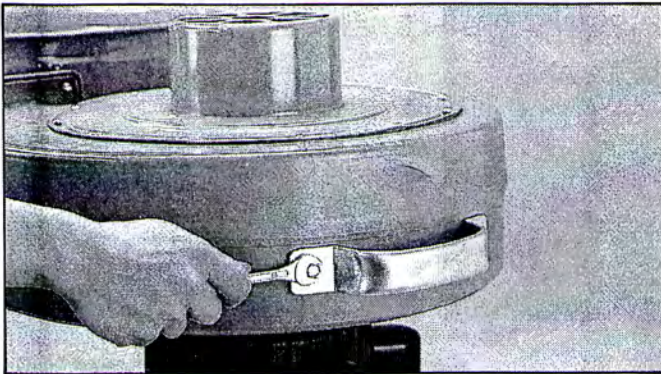


FIG. 9



THE HANDLE BAR FIXED TO THE COLLECTOR BODY USING TWO  $1/4" \times 1/2"$  HEX FLANGE HEAD SCREWS, TIGHTEN ALL FASTENERS SECURELY. FIG. 10.

FIG. 10

ATTACH THE UPPER BAG SUPPORT TO THE COLLECTOR BODY USING WASHER AND NUT TIGHTEN ALL FASTENERS SECURELY. FIG. 11

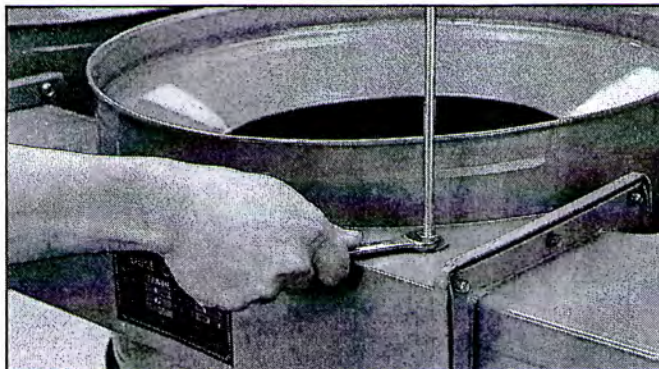
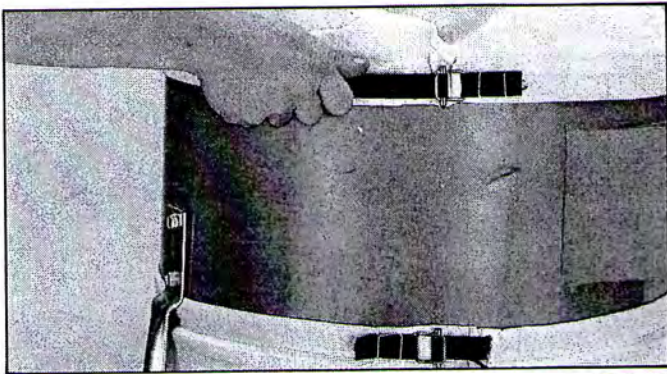


FIG. 11





PLACE THE COLLECTOR AND FILTER BAGS ONTO THE COLLECTOR AND SECURE WITH THE BELTS AS SHOWN IN FIG. 12.

FIG. 12

AFTER THE BAGS ARE SECURED, THE UPPER BAG SHOULD BE HANG FROM THE UPPER BAG SUPPORT AS FIG. 13.

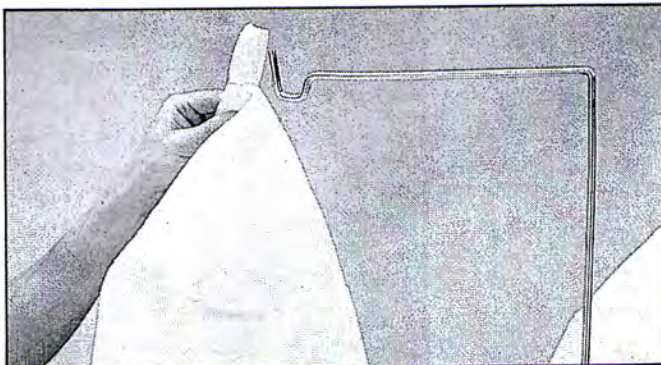
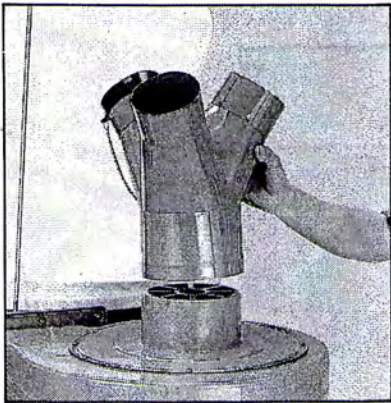


FIG. 13



THE SHUTTER CAN NOW BE PLACED ON THE INTAKE HOLE OF THE FAN/MOTOR ASSY AS SHOWN IN FIG. 14.

FIG. 14

YOUR NEW DUST COLLECTOR SHOULD NOW LOOK LIKE THE ONE PICTURED IN FIG. 15.

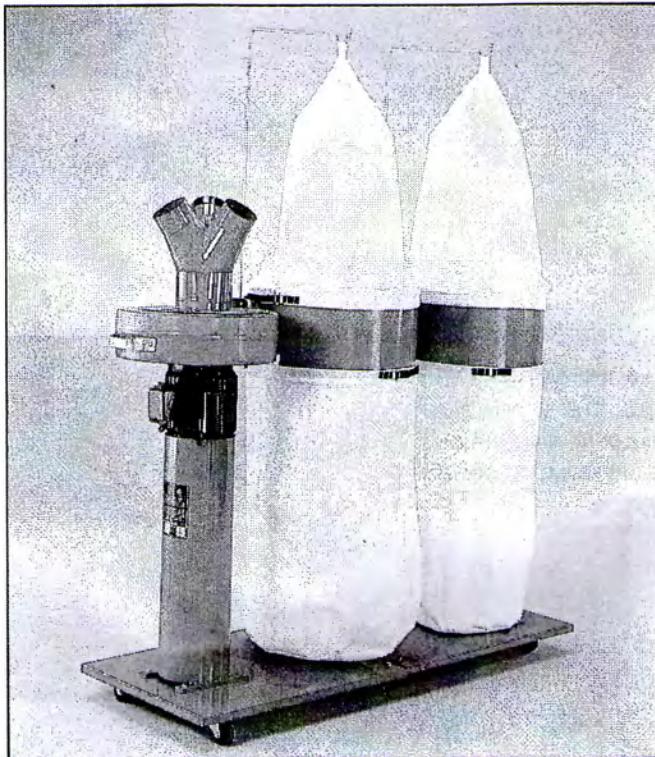
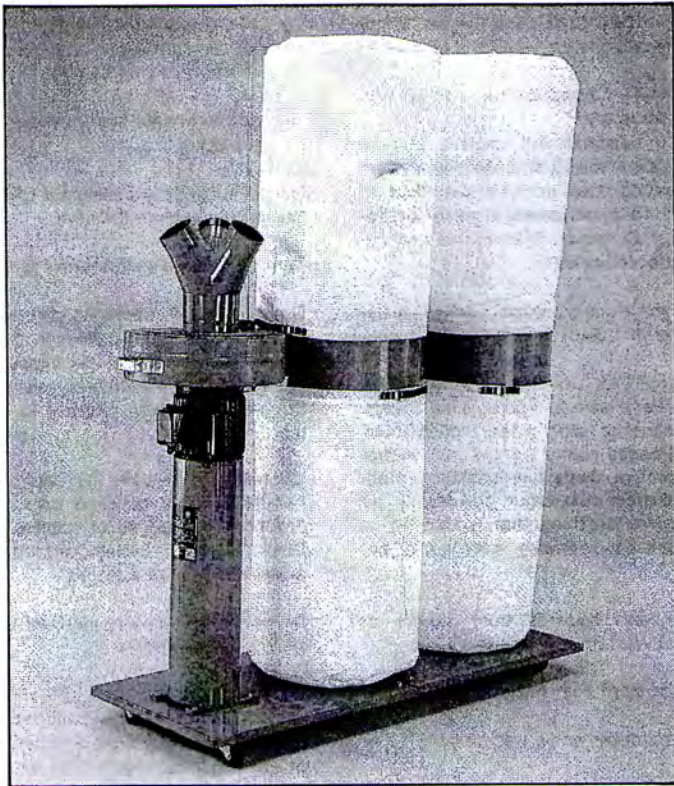


FIG. 15



THE DUST COLLECTOR IS NOW READY TO BE PLACED INTO SERVICE. BEFORE CONNECTING TO A POWER SOURCE, BE SURE THE POWER SOURCE IS PROPERLY GROUNDED AND IS OF PROPER VOLTAGE AND AMPERAGE.

## SAEETY PULES

---

### IMPORTANT SAFETY INSTRUCTIONS

When using your Dust Collo-ction System, follow basic safety precautions including the following.

**WARNING:** To reduce the risk of fire, electric shock, or injury:

- Read and understand this owner's manual and all labels on the Dust Collection System before operating. Use only as described in this manual. To avoid personal injury or damage to Dust Collection System, use only recommended accessories.

Sparks inside the electrical parts, can ignite flammable vapors or dust. To avoid fire or explosion:

- Do not vacuum, or use this Dust Collection System near flammable or combustible liquids, gases, gasoline or other fuels, lighter fluid, cleaners, oil-based paints, natural gas, hydrogen, or explosive dusts like coal dust, magnesium dust, grain dust, or gun powder.
- Do not vacuum anything that is burning or smoking, such as cigarettes, matches, or hot ashes.
- To avoid health hazards from vapors or dusts, do not vacuum toxic materials.
- Do not use or store near hazardous materials.
- Do not use outdoors or on wet surfaces.
- Put unit on a stable, level surface.
- Route vacuum hose and electric cord out of traffic areas.
- Do not allow to be used as a toy. Close attention is necessary when used by or near children.
- Do not leave appliance plugged in. Unplug from outlet when not in use and before servicing.

- To avoid injury from accidental starting, unplug power cord before changing or cleaning filter/dust bag or chip bag.

- Do not use without filter/dust bag and/or chip bag in place.

- Do not unplug by pulling on cord. To unplug, grasp the plug, not the cord.

- Turn off controls before unplugging.

- Do not use with damaged cord, plug or other parts. If your Dust Collection System is not working as it should, has missing parts, has been dropped, damaged, left outdoors, or dropped into water, return it to Service Center.

- Do not pull or carry by cord, use cord as handle, close a door on cord, or pull cord around sharp edges or corners. Do not run Dust Collection System over cord. Keep cord away from heated surfaces.

- Do not handle plug of the Dust Collection System with wet hands.

- Do not put any object into ventilation openings. Do not vacuum with any ventilation openings blocked; Keep free of dust, lint, hair or anything that may reduce air flow.

- Keep hair, loose clothing, fingers, and all parts of body away from openings and moving parts.

- Extension cords in poor condition or that are too small can pose fire and shock hazards. When using an extension cord, be sure it is in good condition. See "Extension Cords" in the "Operation" section for proper wire sizes.

- Connect to properly grounded outlet only (See "Grounding instructions" on page 14.)

SAVE THESE INSTRUCTIONS

## SAFETY RULES

---

1. **READ AND BECOME FAMILIAR** with the entire operating manual.
2. **KEEP GUARDS AND COVER** in place and in working order.
3. **ALWAYS USE SAFETY GLASSES.** Also use face or dust mask if cutting operations is dusty. Everyday eye-glasses only have impact resistant lense; they are not safety glasses.
4. **KEEP WORK AREA CLEAN.** Cluttered areas and benches invite accidents.
5. **DON'T FORCE TOOL.** It will do a better and safer job at the rate for which it was designed.
6. **AVOID ACCIDENTAL STARTING.** Make sure switch is in "OFF" position before plugging in cord.
7. **DISCONNECT TOOLS BEFORE SERVICING** and when changing accessories such as blades, bits, cutters.
8. **DON'T OVERREACH.** Keep your proper footing and balance at all times. For best footing wear rubber soled footwear. Keep floor clear of oil, scrap wood, etc.
9. **WEAR PROPER APPAREL.** Loose clothing or jewelry may get caught in moving parts. Wear protective hair covering to contain long hair.
10. **MAKE WORKSHOP KIDPROOF.** Place a padlock on the switch when blade saw is not in use and store the key in a safe location.
11. **REMOVE ADJUSTING KEYS AND WRENCHES.** Form habit of checking to see that keys and adjusting wrenches are removed from tool before turning it on.
12. **AVOID DANGEROUS ENVIRONMENT.** Don't use power tools in damp or wet locations. Keep your work area well illuminated **DO NOT USE** in explosive atmosphere (around paint, flammable liquids, etc.)
13. **KEEP CHILDREN AWAY.** All visitors should be kept a safe distance from work area, especially while operating unit.
14. **USE THE PROPER TOOL.** Don't force tool or attachment to do a job for which it was not designed.
15. **MAINTAIN TOOLS IN TOP CONDITION.** Keep tools sharp and clean for best and safest performance. Follow instructions for lubricating and changing accessories.
16. **SECURE WORK.** Use clamps or a vise to hold work, when practical. It's safer than using your hand and prevents round or irregularly shaped pieces from turning.
17. **CHECK DAMAGED PARTS.** Before further use of the tool, a guard or other part that is damaged should be checked to assure that it will operate properly and perform its intended function—check for alignment of moving parts, breakage of parts, mounting, any other conditions that may affect its operations. A guard or other part that is damaged should be properly repaired or replaced.
18. **USE RECOMMENDED ACCESSORIES** — Consult Owner's Manual. Use of improper accessories could be hazardous.
19. **NEVER STAND ON TOOL.** Injury could occur from a fall.
20. **NEVER LEAVE TOOL RUNNING AND UNATTENDED.**
21. **ALWAYS REMOVE CORD PLUG** from electrical outlet when adjusting, changing parts or working on tool.

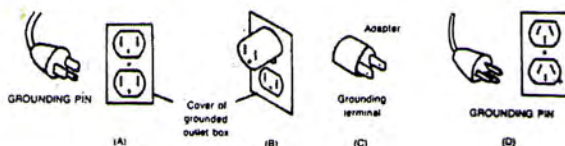
## GROUNDING

1. In the event of a malfunction or breakdown, grounding provides a path of least resistance for electric current to reduce the risk of electric shock. This tool is equipped with an electric cord having an equipment-grounding conductor and a grounding plug. The plug must be plugged into a matching outlet that is properly installed and grounded in accordance with all local codes and ordinances.
2. Do not modify the plug provided it will not fit the outlet, have the proper outlet installed by a qualified electrician.
3. Improper connection of the equipment grounding conductor can result in a risk of electric shock. The conductor with insulation having an outer surface that is green with or without yellow stripe is the equipment-grounding conductor. If repair or replacement of the electric cord or plug is necessary, do not connect the equipment-grounding conductor to a live terminal.
4. Check with a qualified electrician or serviceman if the grounding instructions are not completely understood, or if in doubt as to whether the tool is properly grounded.
5. Use only 3-wire extension cords that have 3-prong grounding plugs and 3-pole receptacles that accept the tool's plug.
6. Repair or replace damaged or worn cord immediately.
7. This tool is intended for use on a circuit that has an outlet that looks like the one illustrated in sketch A. The tool has a grounding plug that looks like the plug illustrated in sketch A. A temporary adapter, which looks like the adapter illustrated in sketches B and C, may be used to connect his plug to a 1-pole receptacle as shown in sketch B if a properly grounded outlet is not available. The temporary adapter should be used only until a properly grounded outlet can be installed by a qualified electrician. The green-colored rigid ear, lug, ect. extending from the adapter must be connected to a permanent ground such as a properly grounded outlet box.

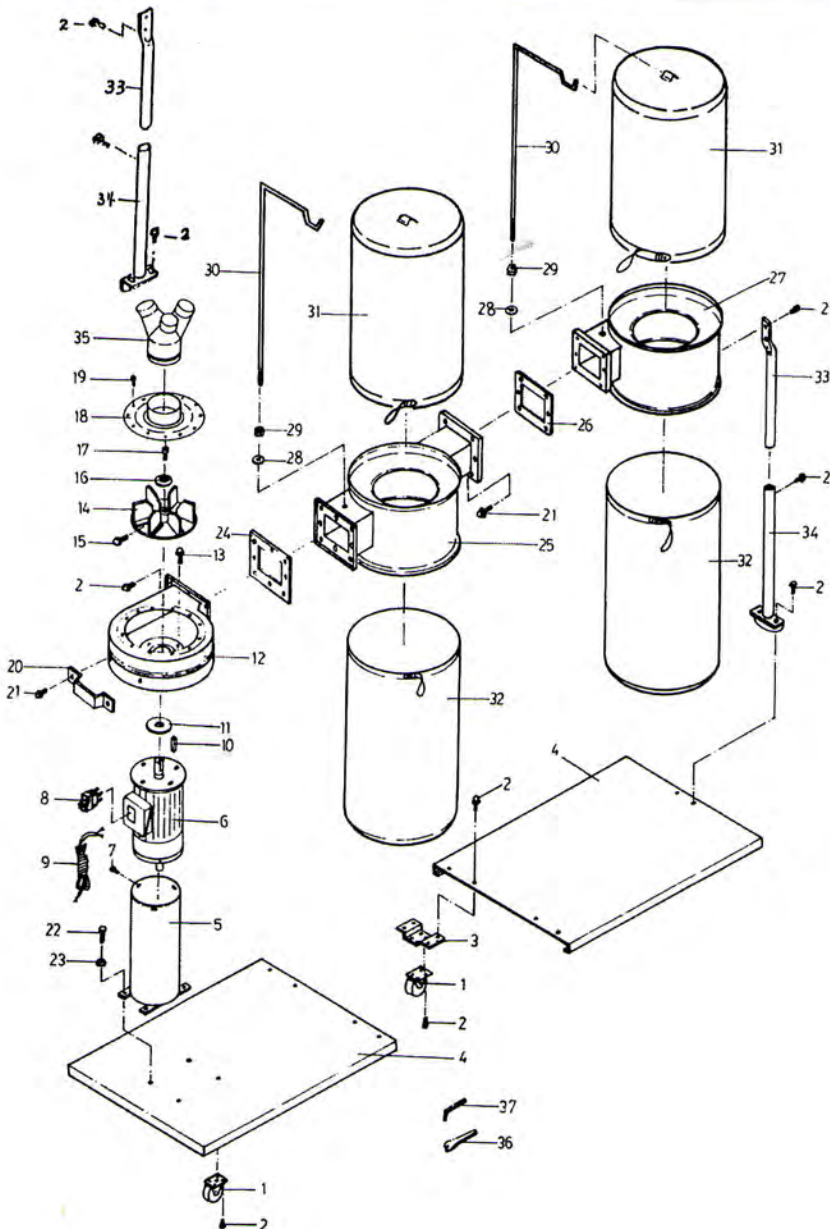
NOTE: The type of electrical plug and receptacle differs from country to country.

Caution: In Canada only the grounding shown in figure (A) is acceptable. The extension cords should be CSA certified S.J.T. type or something better.

Caution: In Australia only the grounding shown in figure (D) is acceptable. The extension cords should be SAA certified.



# PARTS DIAGRAM



## PARTS LIST

PART NO.	DESCRIPTION	QTY.
1	Caster	6
2	Screw Hex. Fig. Hd. 5/16"-18UNC X 1/2" L	52
3	Bracket Caster Plate	2
4	Base Plate	2
5	Column & Motor Bracket	1
6	Motor	1
7	Screw Hex. Fig. Hd. 1/4"-20UNC X 1/2" L	3
8	Switch	1
9	Power Cord	1
10	Key 7MM X 7MM X 29MM	1
11	Packing	1
12	Collector Body	1
13	Screw Hex. Fig. Hd. 5/16"-18UNC X 1" L	4
14	Turbo Fan	1
15	Screw Hex. Hd. 3/8"-16UNC X 1/2" L	1
16	Washer	1
17	Screw Hex. Soc. Hd. M6 X 1.0 X 18MM-LH	1
18	Inlet Cover	1
19	Screw Pan. Fig. Hd. 10-24UNC X 3/8" L	12
20	Hand Pail	1
21	Screw Hex. Hd. 1/4"-20UNC X 1/2" L	8
22	Screw Hex. Hd.	4
23	Washer 5/16"	4
24	Screw Hex. Hd. Packing	1
25	Left-Collector	1
26	Packing	1
27	Left-Collector	1
28	Washer 5/16"	2
29	Nut 5/16"-18UNC	2
30	Upper Bag Support	2
31	Filter Bag	2
32	Collector Bag	2
33	Collector Support	1
34	Collector Support	1
35	Inlet	1
36	Open End Wrench 12MM	1
37	Wrench Hex. 5MM	1

NOTE: AS PART 33, 34, AND 4 ASSEMBLED WELL, PLS LOOSEN 7 TO ADJUST 27 AND 2, IF 27 AND 2 ARE NOT IN THE RIGHT POSITTON